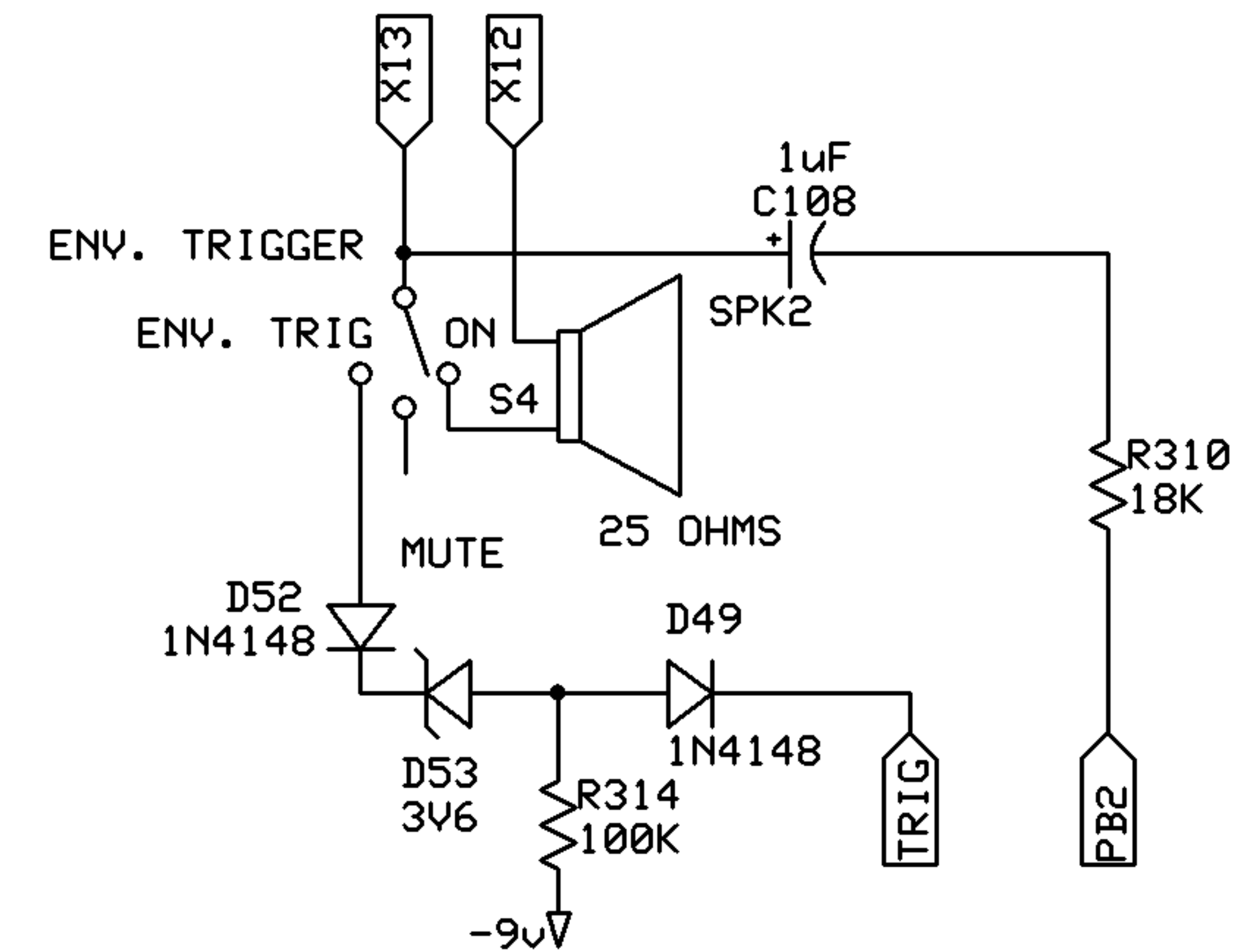
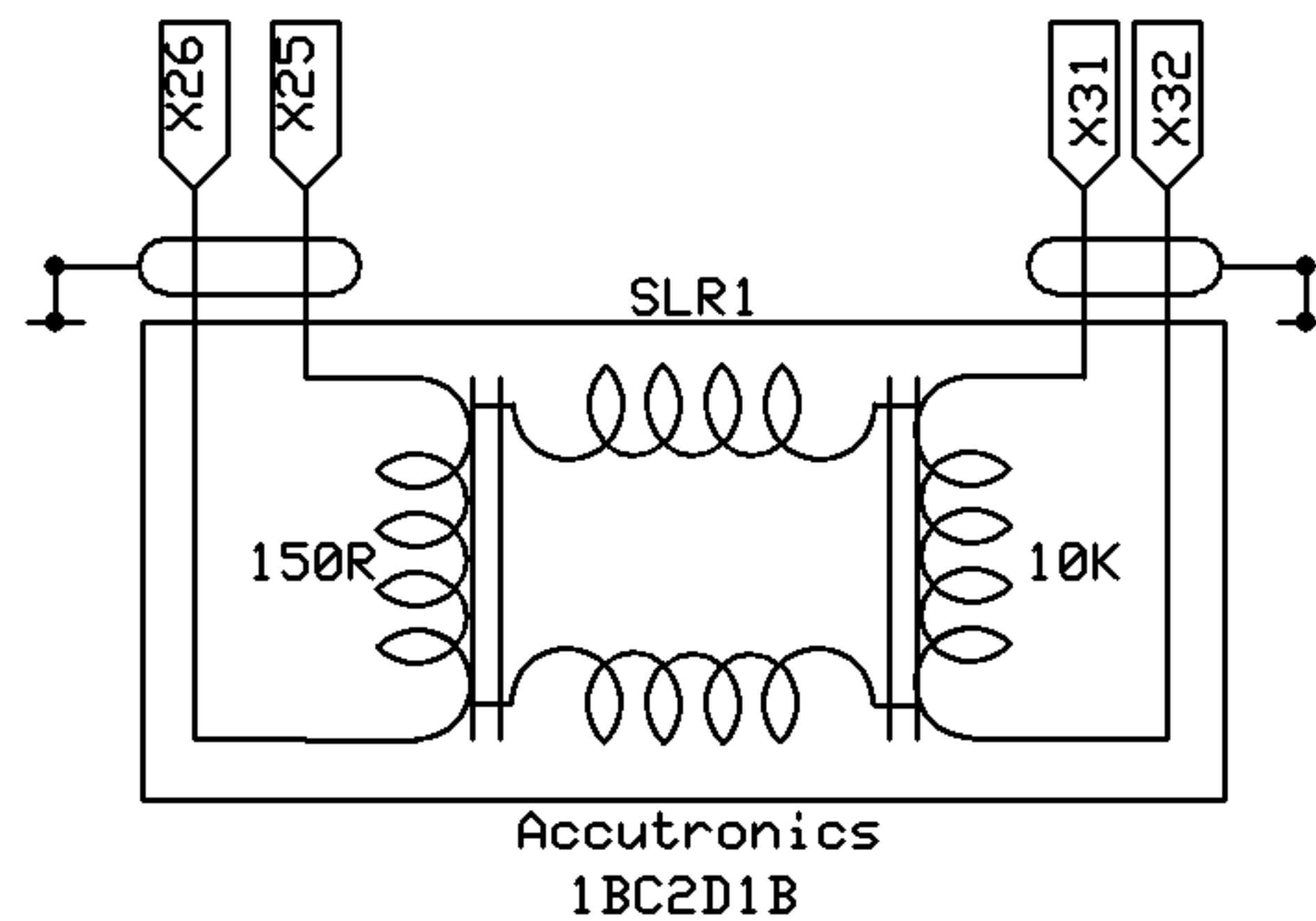
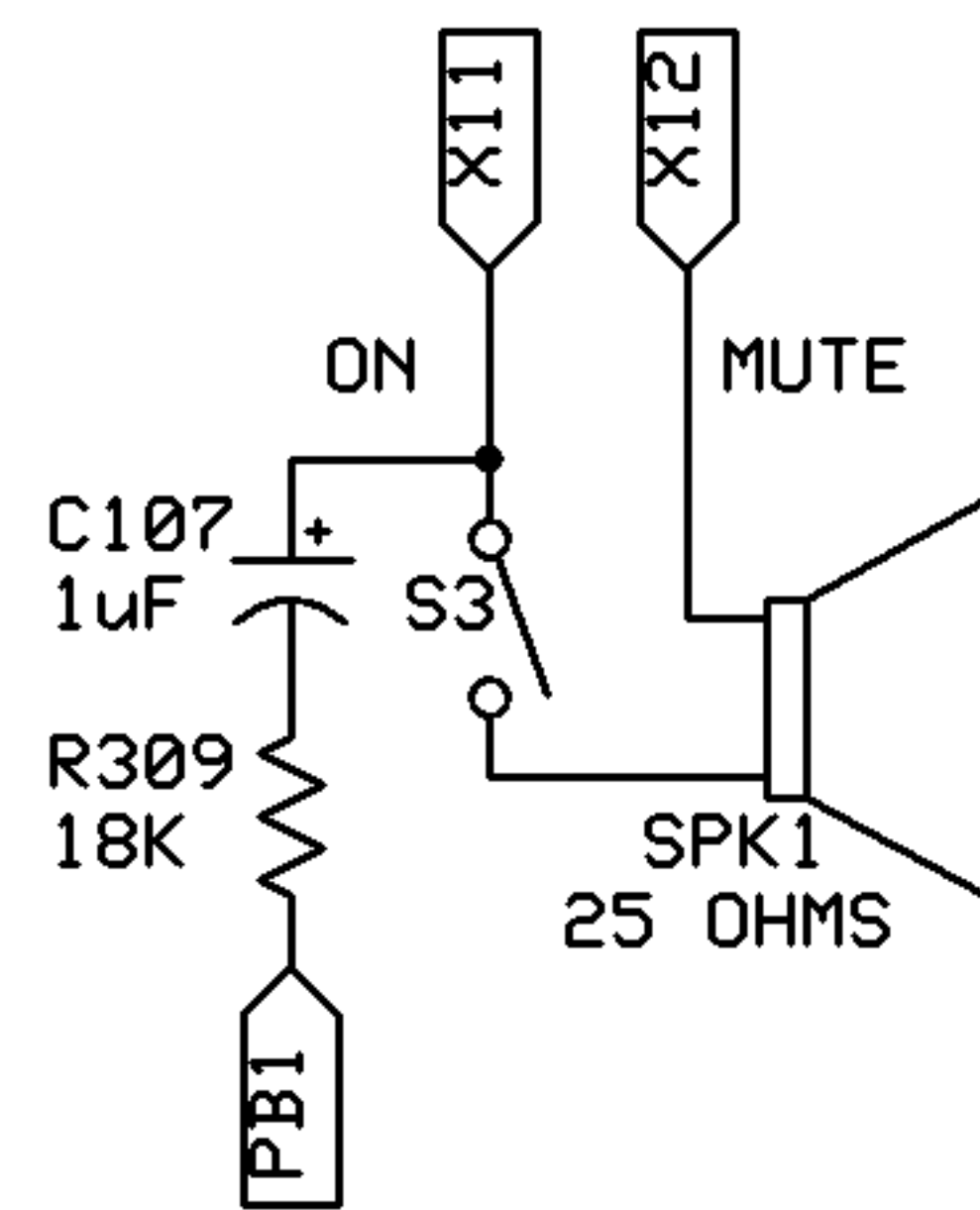
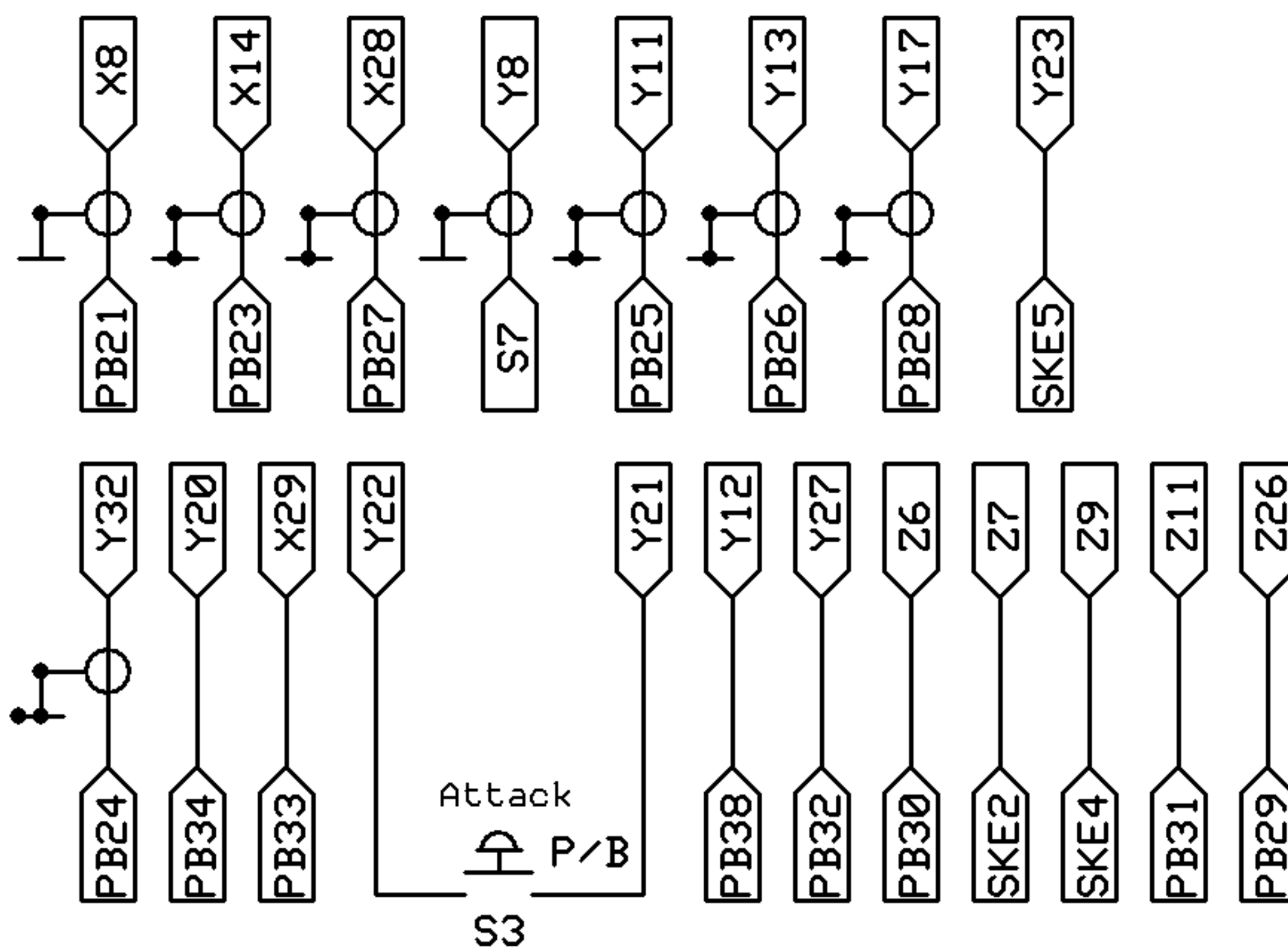


Type 1, B = 150 ohm, C = 10K ohm, 2 = Medium Reverb Time (1.75 to 3 secs), D = Input and Output insulated from chassis, 1 = No locking mechanism, B = Horz. lower open

CH. 1 SPEAKER

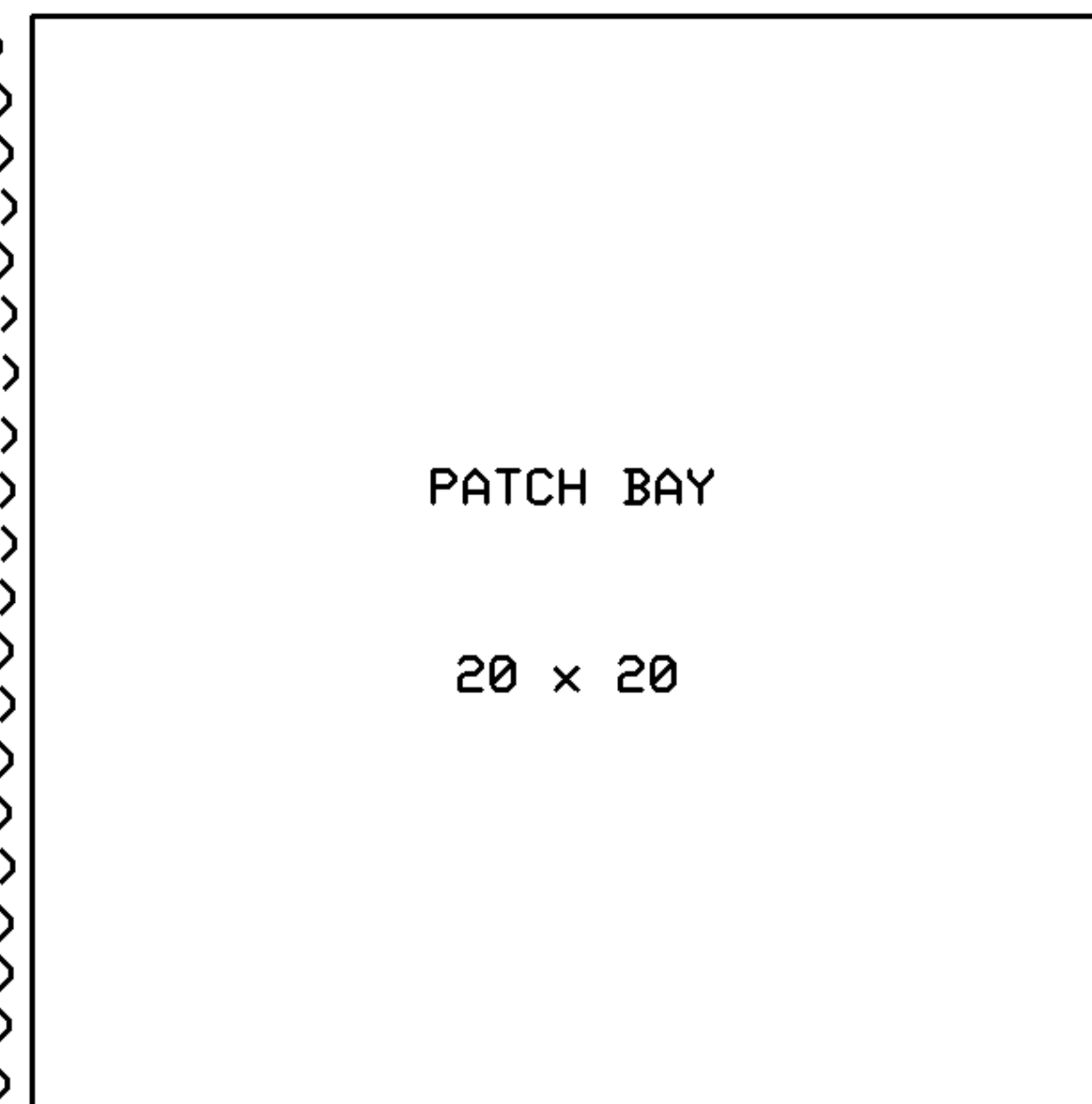


PCB CONNECTOR PINOUTS
(BOTTOM VIEW)



- Output Ch. 1 (PB21)
- Scope/Meter (PB22)
- Output Ch. 2 (PB23)
- Envelope Shaper In (PB24)
- Ring mod. A (PB25)
- Ring mod. B (PB26)
- Reverb. (PB27)
- Filter (PB28)
- Osc. 1 Freq. (PB29)
- Osc. 2 Freq. (PB30)
- Osc. 3 Freq. (PB31)
- Osc. 1 Shape (PB32)
- Osc. 2 shape (PB33)
- Osc. 3 shape (PB34)
- Envelope Decay (PB35)
- Reverb. mix (PB36)
- Filter freq. (PB37)
- Filter resp. (PB38)
- Output Ch. 1 level (PB39)
- Output Ch. 2 level (PB40)

- OSC. 1 Sine (PB1)
- OSC. 1 Sawtooth (PB2)
- OSC. 2 Square (PB3)
- OSC. 2 Ramp (PB4)
- Osc 3. Square (PB5)
- Osc. 3 Ramp (PB6)
- Noise (PB7)
- 1 (PB8)
- Input₂ (PB9)
- Filter (PB10)
- Trapezoid (PB11)
- Env. signal (PB12)
- Ring mod. (PB13)
- Reverb. (PB14)
- Sig. Invert (PB15)
- Sample & Hold (PB16)
- Spare (PB17)
- Spare (PB18)
- Joystick <-> (PB19)
- Joystick ↑ (PB20)



X1	Y1	Z1
X2	Y2	Z2
X3	Y3	Z3
X4	Y4	Z4
X5	Y5	Z5
X6	Y6	Z6
X7	Y7	Z7
X8	Y8	Z8
X9	Y9	Z9
X10	Y10	Z10
X11	Y11	Z11
X12	Y12	Z12
X13	Y13	Z13
X14	Y14	Z14
X15	Y15	Z15
X16	Y16	Z16
X17	Y17	Z17
X18	Y18	Z18
X19	Y19	Z19
X20	Y20	Z20
X21	Y21	Z21
X22	Y22	Z22
X23	Y23	Z23
X24	Y24	Z24
X25	Y25	Z25
X26	Y26	Z26
X27	Y27	Z27
X28	Y28	Z28
X29	Y29	Z29
X30	Y30	Z30
X31	Y31	Z31
X32	Y32	Z32

NOTES:

3. X24, Y25, Z5, Z10, Z15, Z25 = 0V
2. X4, Y18, Z19, Z20, Z21 = +12V
1. X3, Y16, Z16, Z17, Z18 = -9V

Sage Music Electronics

Internal wiring connections

Derek G Revell

Rev 1.2

25/11/2013

Page 3 OF 5